

TraceMap

Artificial intelligence use in the Alert and Cooperation Network (ACN) and TRACES

European Commission
MARE Market advisory Council
Brussels, 12/06/2026

Directorate Health and Food Safety

Ms Eva SIEGENER, Unit G5: Food hygiene, feed and fraud

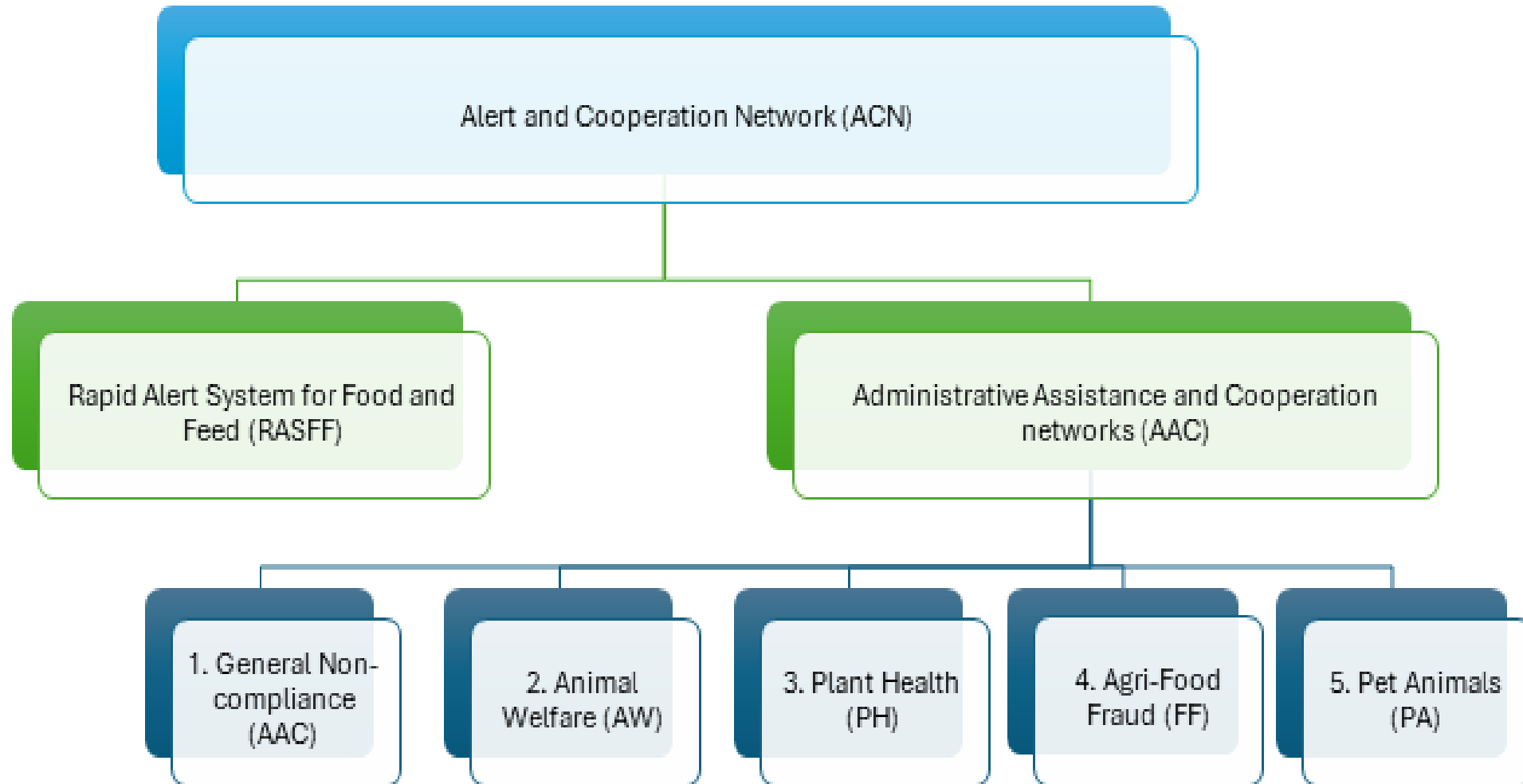
Ms Eva Siegener, Investigator, G5

ACN data 2025

Focus on fishery products



ALERT AND COOPERATION NETWORK (ACN)



ACN OVERVIEW 2025

Alert and Cooperation Network (ACN) Overview 2025

date of extraction: 13 January 2026
source: iRASFF using QlikSense

Agri-Food Fraud (FF)

294

Administrative Assistance and Cooperation (AAC)

3146

Rapid Alert System for Food and Feed (RASFF)

5344

Pet Animals (PA)

594

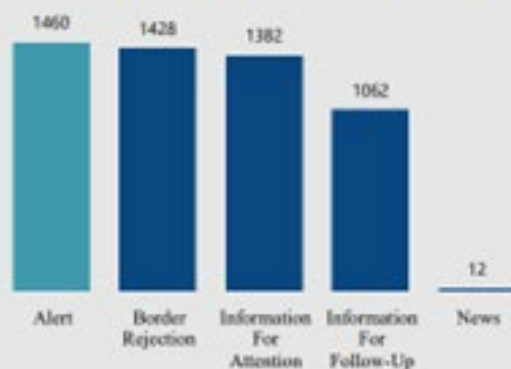
Plant Health (PH)

183

Animal Welfare (AW)

929

RASFF notifications by classification



Top 10 ACN notifying countries



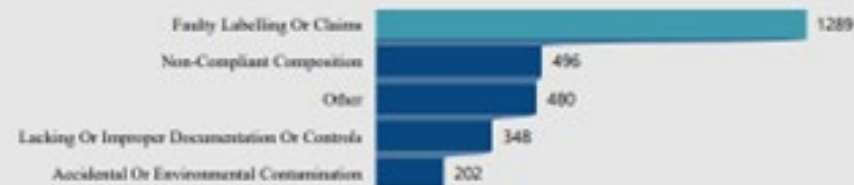
Top product categories by network

Network	Product category	Notifications
RASFF	Fruits And Vegetables	1057
PA	Dogs	563
AAC	Fruits And Vegetables	510
AW	Pigs - Fattening Pigs	361
FF	Live Animals	34
PH	Intended For Planting: Already Planted	30

Top 5 Agri-Food Fraud notifications by food fraud type



Top 5 Non-Compliance notifications by non-compliance type



TOP 10 CATEGORIES IN THE ACN

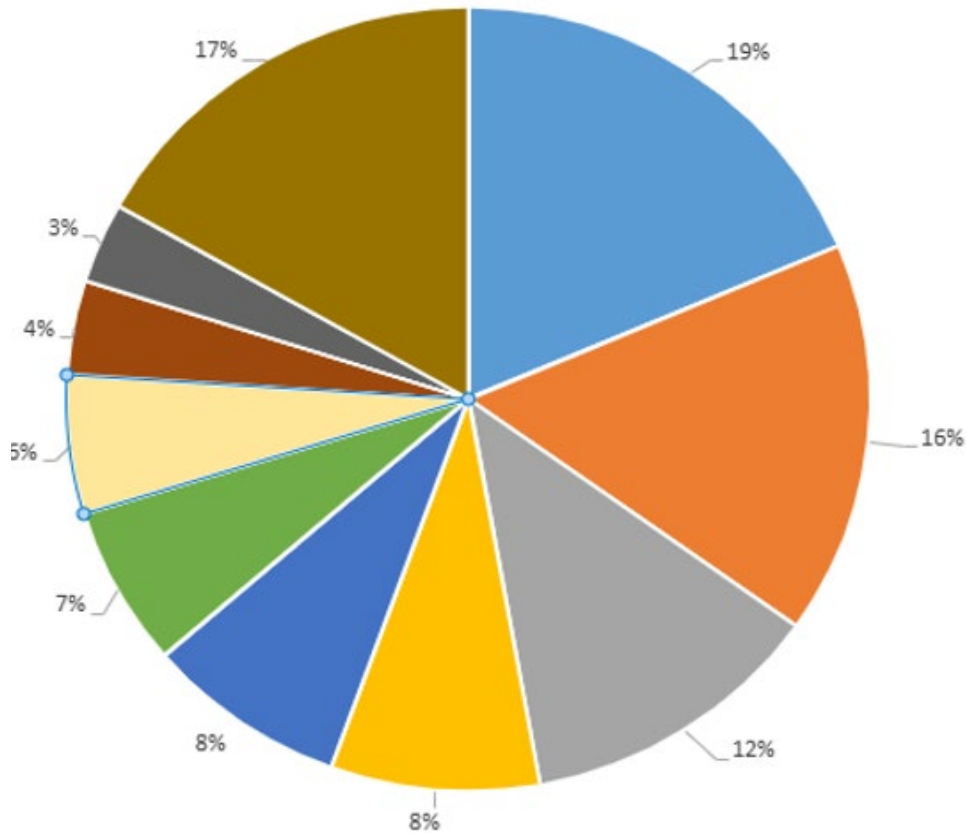
Product Category	Number of notifications	%
Fruits And Vegetables	1572	17,9
Nuts, Nut Products And Seeds	714	8,1
Dietetic Foods, Food Supplements And Fortified Foods	709	8,1
Meat And Meat Products, And Poultry	507	5,8
Cereals And Bakery Products	487	5,5
Meat And Meat Products (Other Than Poultry)	405	4,6
Herbs And Spices	377	4,3
Fish And Fish Products	347	4
Confectionery	339	3,9
Live Animals	269	3,1



Fish and Fish Products



4% of ACN notifications

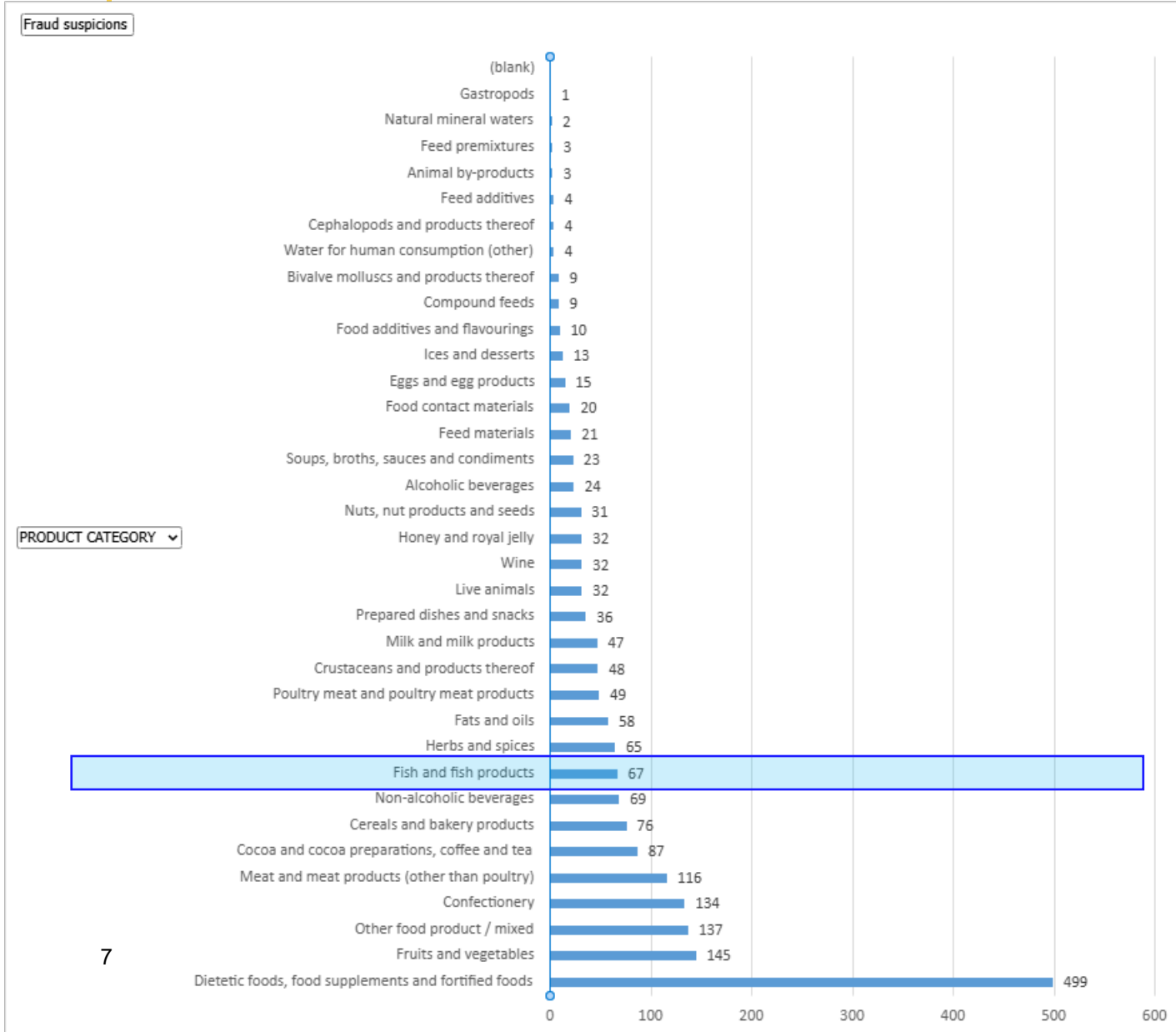


- Pathogenic micro-organisms (*Listeria monocytogenes*)
- Metals (mercury, cadmium)
- Traceability issues (mislabelling, misdefinition of origin/destination)
- Adulteration, species substitution
- Parasitic infestation (*Anisakis*, Nematode larvae)
- Biological contaminants (histamine)
- Temperature failures
- Residues of veterinary medicinal products (leucomalachite green, oxytetracycline)
- Environmental pollutants (perfluorooctane sulphonic acid (PFOS), polycyclic aromatic hydrocarbons)

Product	Approximate Share
Salmon	18%
Tuna	13%
Swordfish	9%
Mackerel	6%
Herring	5%
Others (anchovy, hake, shark, pollock)	49%



Fraud suspicions in the ACN - 2025



Number of cases flagged as suspicion of fraud per product category in 2025.



ACN reports on EU Agri-food fraud suspicions



Restricted entries are shared exclusively within the EU Food Fraud Network to support enforcement actions.



Publicly accessible information is provided to promote general transparency and awareness to food business operators and to support vulnerability assessments.

TraceMap

Where this journey started?

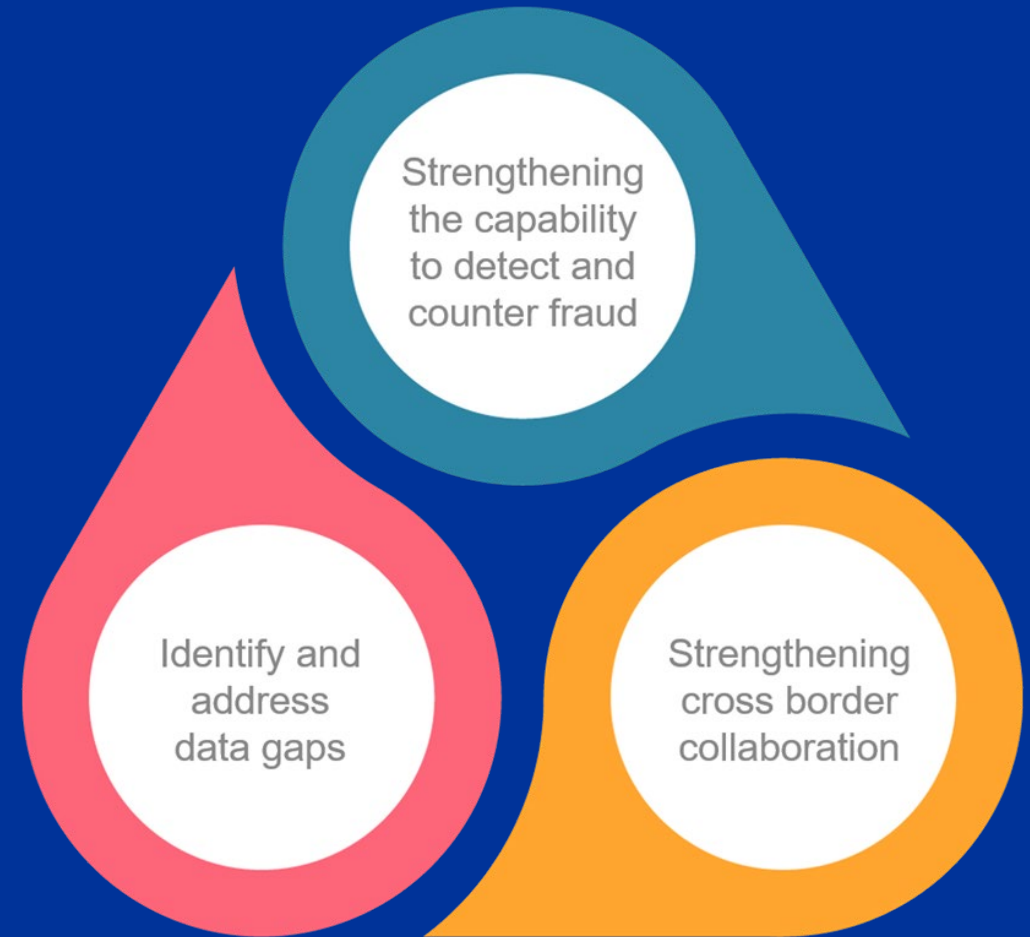
The compass guiding TraceMap



Protecting the integrity of the agri-food chain

The Vision for Agriculture and Food (COM/2025/75 final)

- provides a strategic roadmap for the future of farming and the agri-food sector.
- highlights the importance of protecting the reputation and competitiveness of EU agri-food products.
- Highlights the consumers' right to authentic and trustworthy products.

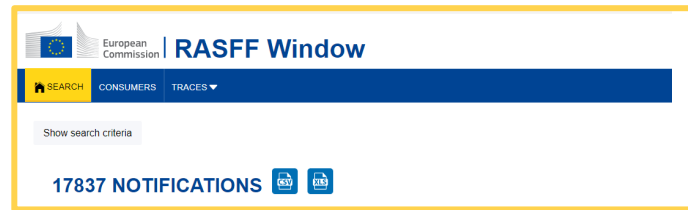


TraceMap: concrete response to this vision

➔ turning fragmented data into actionable intelligence for food safety and fraud investigations



iRASFF and TRACES: bridging the gap



iRASFF

- Risk & Rapids Alert
- Unstructured text, images, limited traceability.



TRACES

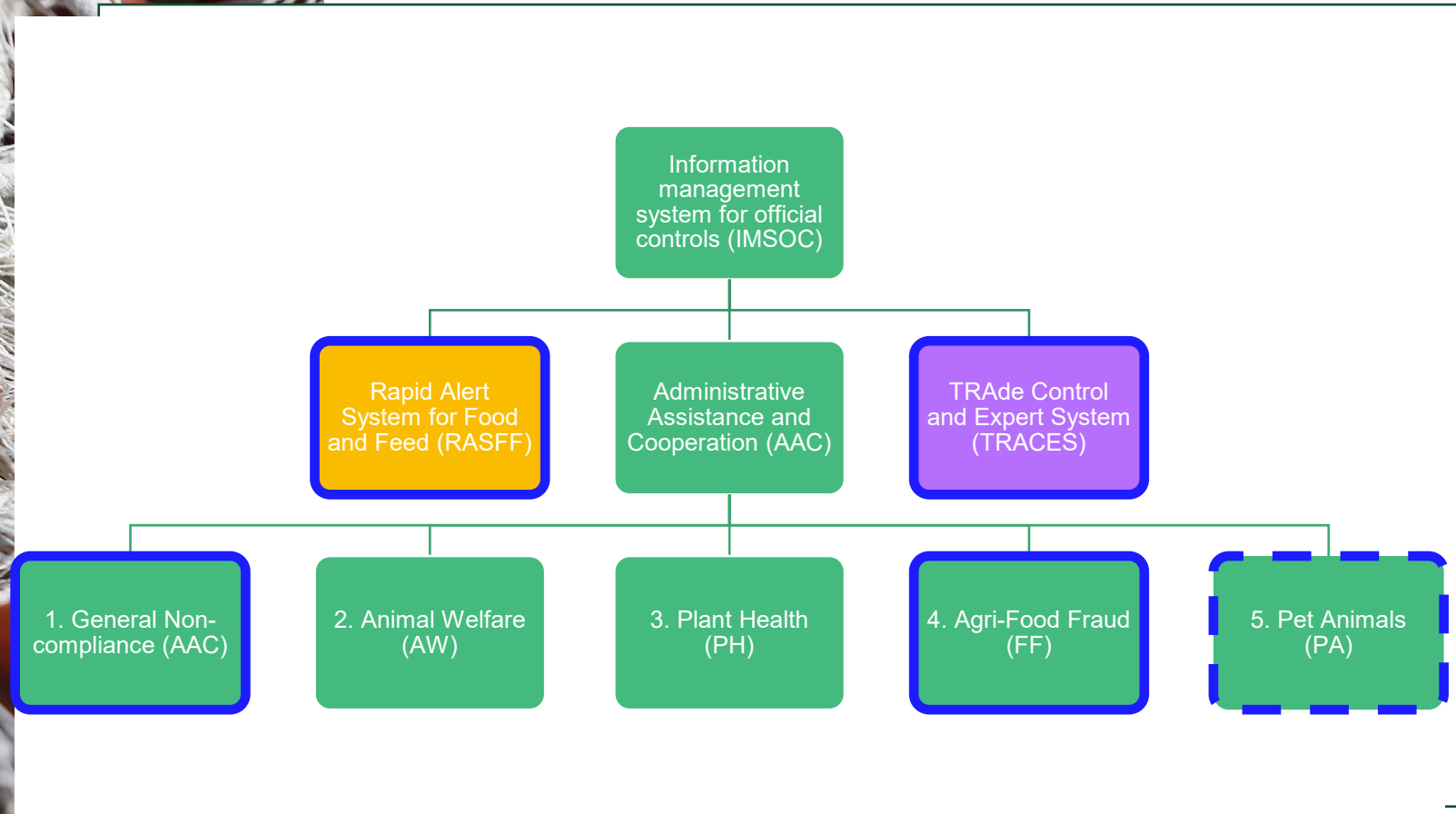
- Movements, certificates & detailed trade data
- No direct link to risk events.

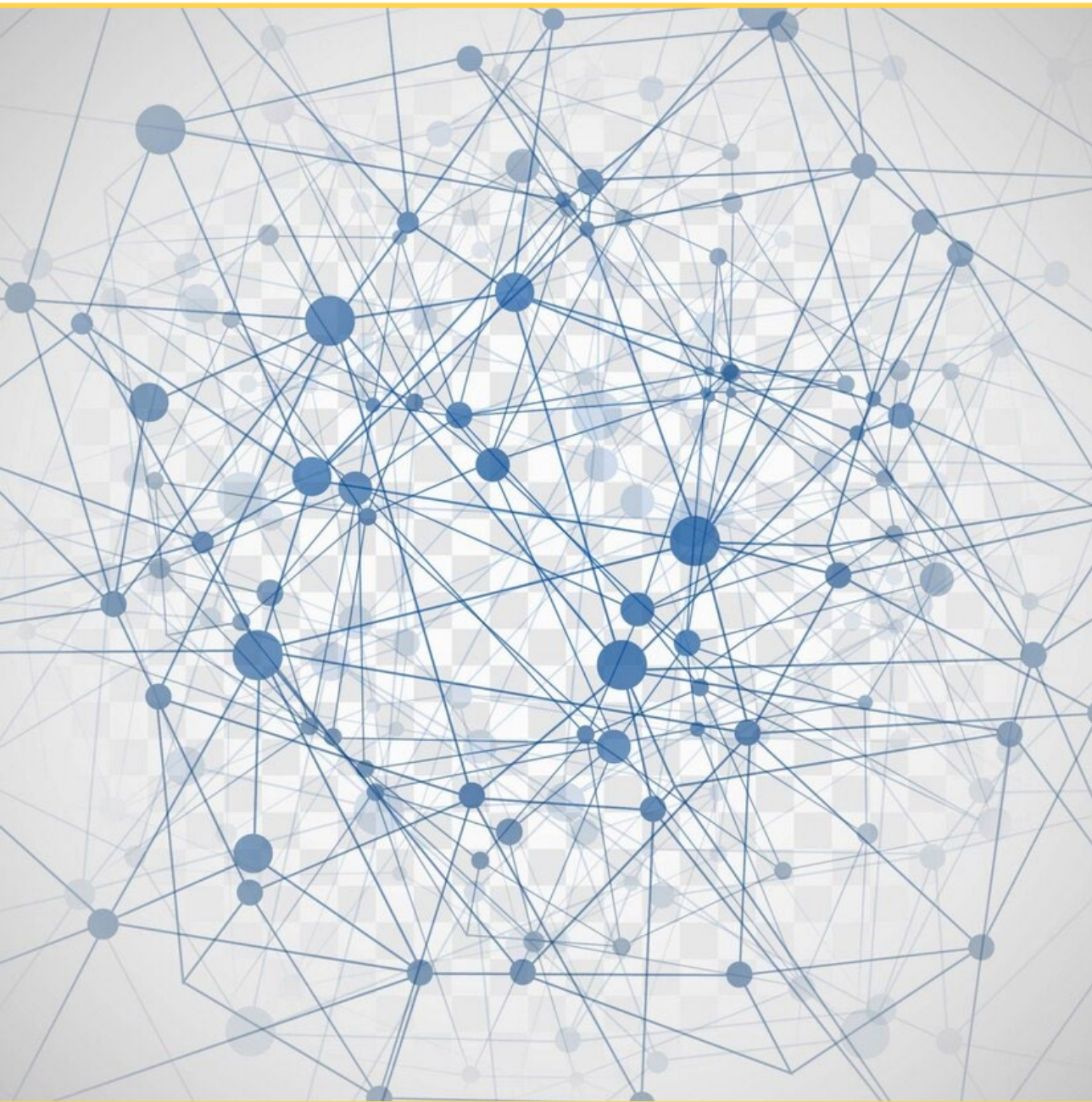


TraceMap

- Deeper and broader investigational knowledge
- Enhanced human intelligence for greater efficiency (time and data processing)
- More structured, systematic approach to analysis and investigation (less ad hoc / “artsy”)

From concept to action





GOALS:

- Semi-automated building of traceability maps
- Multiply detection of fraud
- Accelerate recall process of dangerous products
- Speeding-up foodborne outbreaks investigations
- Accelerate recurring activities (weekly, monthly reporting)




TraceMap Graph








Example of Notification

NOTIFICATION 2025.1070

Insufficient traceability/unauthorized transport of frozen fish from China

Notified 14 FEB 2025 by  Germany | Last update: 21 FEB 2025  EC validated





Reference	2025.1070	
Subject	Insufficient traceability/unauthorized transport of frozen fish from China	
Product type	Food	
Notification basis	Border control - consignment detained	
Classification	Border rejection notification	

Risk


Risk decision	Potentially serious	
Hazards observed	Not defined	
Nb. persons affected	---	
Symptoms / Illness	Unknown	


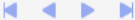
Organisations

 China (o)(op)(ffa)  Germany (n)(d)(op)
(n) Notifying | (o) Origin | (d) Distribution | (op) Operator
(ffup) Flagged for Follow-Up | (ffa) Flagged For Attention

Date of notification	14-02-2025	
Notifying country	Germany	
Product	Salmon fillets (Oncorhynchus gorbuscha)	
Product category	Fish and fish products	

Measures taken

Country	Action	Product name	URL
 Germany	Product (to be) redispached or destroyed	Salmon fillets (Oncorhynchus gorbuscha)	None

Items per page: 
Showing 1-1 of 1 

Follow-ups

Fup #	Date	Organisation	Type	Summary	Flagged Organisations
fup1	21 FEB 2025	 European Commission 	Request	No summary	



TraceMap Search



TraceMap search- features

How data is processed and put at your disposal in the Search Based Application

The screenshot displays the TraceMap search application interface. At the top, there is a search bar with the text 'Ma...' and a search icon. Below the search bar, there are several filter buttons: 'All' (8222), 'RASFF' (631), and 'TRACES' (7591). A navigation bar contains various filters and categories: Sources, Modified, Languages, Concepts, Notification Id, Reference Number, Network, Operator, Lot Number, Company, Product, Hazard, Country, Organisation, and 'Is processed by Doc AI?'. The main content area shows a list of search results, each starting with 'TRACES/CHED/Certificate' and a checkbox for 'CHEDP.ES.2025'. The results are partially redacted with black bars. On the right side, there are four data visualization panels: 'Timeline' (a line graph showing data points from 2021 to 2025), 'Network' (a network diagram), 'Heatmap' (a heatmap with a color scale from 0 to 130), and 'Tag Cloud' (a cloud of tags including 'Spain', 'Vigo', 'Valencia', 'Madrid', 'Barcelona', 'Morocco', 'wild stock', 'Argentine hake', 'Fishing Vessel', and 'Factory Vessel'). At the bottom right, there are two blue buttons with a minus sign and a plus sign. The bottom right corner of the image features the European Union flag.

If I only could read it... AI processed document

Deliverydocument.pdf

<https://webgate.ec.europa.eu/irasff/notification/view/7>



Deliverydocument.pdf

<https://webgate.ec.europa.eu/irasff/notification/view/7>

Document type: invoices
Page range: 1 - 1

Field	Value
customer name	[REDACTED]
customer address	Józef [REDACTED]
vendor name	[REDACTED] Andrzej [REDACTED]
vendor tax id	79 [REDACTED]
vendor address	Józef [REDACTED]
invoice date	2025-06-08
invoice id	1/06/2025
due date	[REDACTED]
total tax	0
total price	48 [REDACTED]
line items → description	T [REDACTED]
line items → quantity	4 [REDACTED]
line items → unit price	1 [REDACTED]
line items → amount	4 [REDACTED]
line items → tax	0
line items → tax rate	0%

This document is part of Notification: 7 [REDACTED]
and Reference Number: 2025 [REDACTED]



TraceMap's daily impact





TraceMap

Mapping complex agri-food supply chains

1. Key Advantages:

- Faster Responses: Reduces investigation time from weeks to hours/days

2. Proactive Fraud Detection:

- Identifies repeat offenders (e.g., vessels with multiple violations)

3. Supply Chain Transparency:

- Maps entire journey of fishery products (e.g., from Vietnamese waters to EU supermarkets)

4. Regulatory Compliance:

- Supports EU import controls (e.g., Regulation 2019/1793 on high-risk products)

5. Market Trust:

- Reduces time for recall of food safety incidents → protects consumer confidence



Why it matters

- Fishery products are **high-risk**
 - for fraud (e.g., mislabelling, adulteration)
 - safety issues (e.g., contaminants, parasites)
- TraceMap helps **map supply chains**, detect anomalies, and **accelerate responses**.

TraceMap

Webpage and press release

Commission unveils new AI tool to fight agri-food alerts and food fraud



Commission unveils new AI tool to fight agri-food alerts and food fraud

Brussels, 10 March 2026

The European Commission has unveiled a new artificial intelligence (AI) platform, TraceMap, to accelerate the detection of food fraud, contaminated food and foodborne disease outbreaks across the EU. In line with the EU's high safety standards for food and imported products, this new tool will reinforce consumer safety and help national authorities work more effectively, by innovating on how we assess, detect and respond to food safety risks and fraudulent activity.

TraceMap will use AI to:

- **Improve food safety risk assessments** by streamlining access and analysing critical data.
- **Rapidly identify links** between operators and consignments.
- **Monitor the entire agri-food supply chain**, once a risk is identified, enabling faster recalls of unsafe or fraudulent products.

As of today, TraceMap is accessible to national authorities in all Member States, allowing them to better target controls and carry out more thorough investigations, without requiring additional resources. It will use the extensive data in the existing EU agri-food systems to track trade patterns and production flows at a fast pace. The platform will improve screening accuracy, speed up the detection of suspicious operators and help investigators to detect food fraud and food borne outbreaks and remove non-compliant products from the market quickly. TraceMap empowers Member States to close gaps, address vulnerabilities and strengthen their anti-fraud measures in the agri-food sector. It will also enable better control of imported goods, in line with the strengthened measures set out in the [Vision for Agriculture and Food](#).

TraceMap has been created by the Commission, using AI technology that processes, structures and interprets data from different food safety management platforms across the EU, including the [Rapid Alert System for Food and Feed \(RASFF\)](#) and [Trade Control and Expert System \(TRACES\)](#). A pilot version of TraceMap was recently used to support the identification and recall of infant milk formula made with contaminated ARA oil from China.

For more information

- [TraceMap](#)
- [Vision for Agriculture and Food](#)
- [Rapid Alert System for Food and Feed](#)
- [Trade Control and Expert System](#)

IP/26/594

Quote(s):

"TraceMap is a breakthrough which will revolutionise the EU's capacity to react to food safety crises and to clamp down on food fraud. It will allow faster detection of food fraud and of those trying to circumvent our import conditions. It will provide better coordination between Member States and stronger protection of both EU farmers and consumers. This is critical infrastructure for crisis prevention and control and should help boost all stakeholders' confidence in our robust food safety systems."
Oliver Verbeke, Commissioner for Health and Animal Welfare - 10/03/2026

Press contacts:

- [Ann Hildebrand](#) (+32 2 29 88433)
- [Alexandra](#) (+32 2 29 88873)
- [Elio Antonello](#) (+32 2 29 57065)

General public inquiries: [Susanne Deland](#), by phone 00 800 67 89 10 11, or by email

TraceMap traceability tool

TraceMap is a Commission AI-powered tool that helps to speed up the detection of food fraud and foodborne incidents and outbreaks in any EU country.

It enables quick and efficient action across the EU, making the food chain safer and more transparent when potential problems are flagged.

TraceMap helps national authorities to:

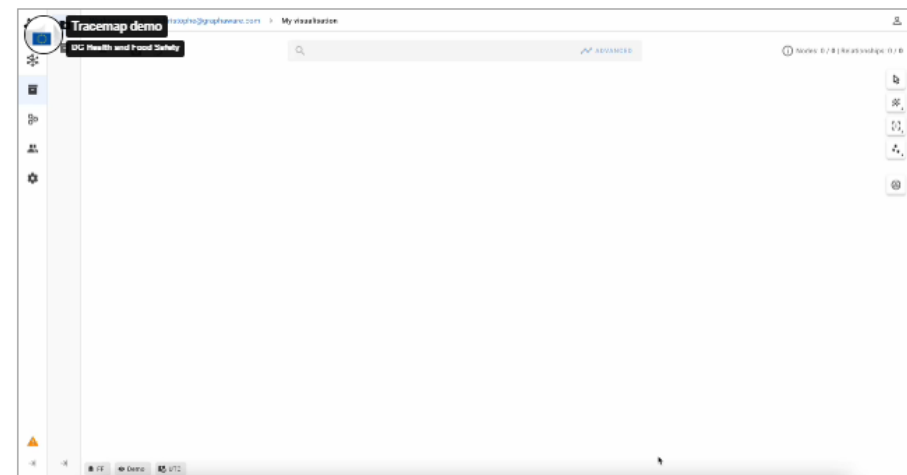
- strengthen food safety, screening, crisis management and consumer protection
- ensure unsafe and non-compliant products are removed from the market more rapidly including in case of food borne outbreaks
- improve the effective control of imported goods, in line with the EU's [Vision for Agriculture and Food](#)
- improve screening accuracy and anti-fraud measures across the whole supply chain
- identify links between operators and consignments across borders
- quickly identify high-risk operators and products
- detect suspicious patterns in trade and production flows.

Mapping complex agri-food supply chains in minutes

Beyond TraceMap, tracing products and operators across the supply chain meant relying largely on manual document checks and direct exchanges between authorities, which require time and resources.

TraceMap solves many of these issues thanks to automated, fast AI analysis and traceability mapping, graphs and search functions that:

- visualise complex supply chains as networks
- help uncover links between operators, products and consignments
- allow the competent authorities in EU member countries to quickly search, filter and extract relevant data with advanced AI
- easily find the right information, at the right time, in EU agri-food databases and systems such as the [trace and control system for animals, food, feed and plants \(TRACES\)](#), the [Alert and Cooperation Network \(ACN\)](#) and the [Rapid Alert System for Food and Feed \(RASFF\)](#).



[tracemap - Food Safety - European Commission](#)





Keep in touch



SANTE-Tracemap-Support@ec.europa.eu



<https://ec.europa.eu/food/safety>



<https://www.linkedin.com/in/evasiegener/>